



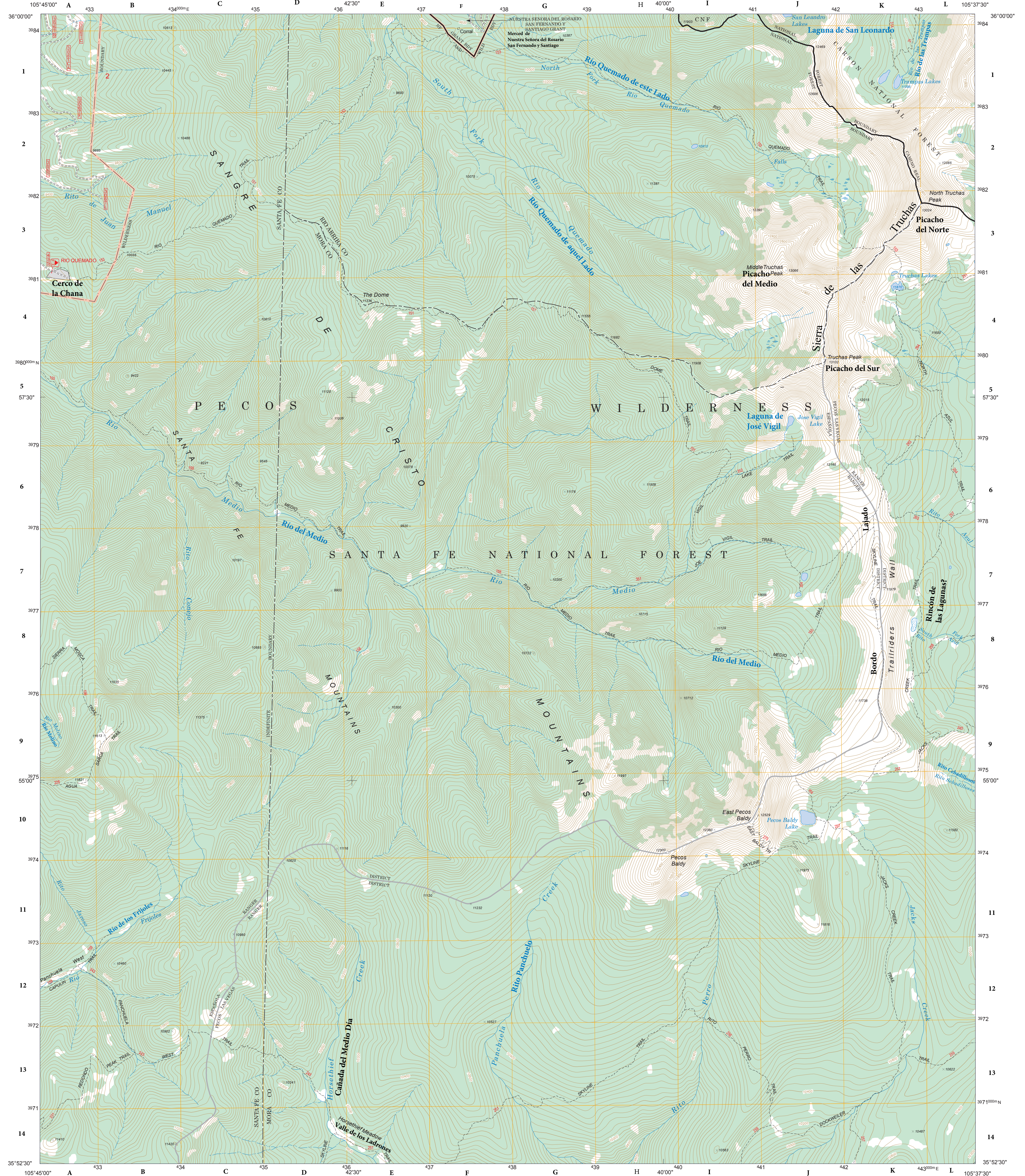
U.S. DEPARTMENT OF AGRICULTURE
FOREST SERVICE

La Sierra de las Truchas

A Manito Topo

Place name annotations compiled by Len Nils Beké and Roberto Valdez from the traditional knowledge of the people of Truchas, Las Trampas, Córdova, Pecos and La Otra Banda (East Pecos). Edited in 2018

TRUCHAS PEAK QUADRANGLE
NEW MEXICO
7.5-MINUTE SERIES (TOPOGRAPHIC)



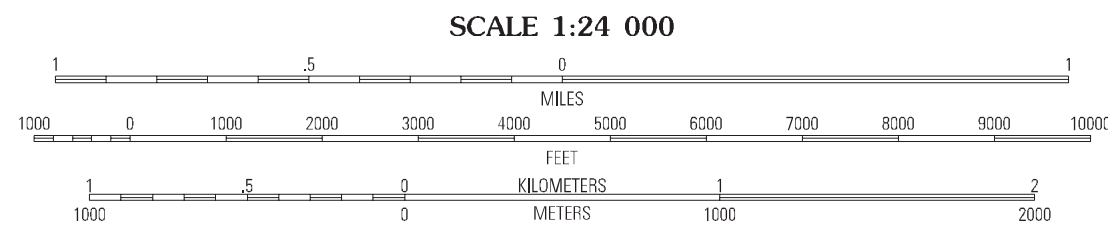
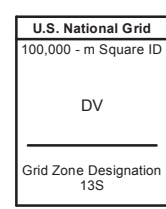
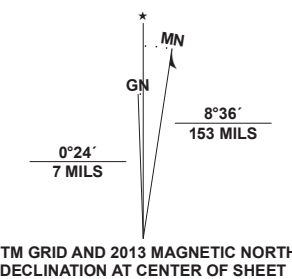
Produced by the USDA Forest Service.
North American Datum of 1983 (NAD 83).
Projection and 1,000-meter ties: Universal Transverse Mercator, zone 13.

Full Revision of Forest Service lands 2015
Updates to Transportation 2015
Updates to Boundaries 2015

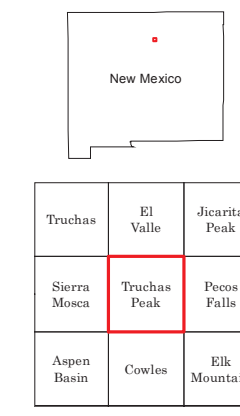
Non-National Forest System lands within the National Forest as of 2015.
Inholdings may exist in other National or State reservations.

This is not a legal document. Public lands are subject to change and leasing, and may have access restrictions. Not all roads and trails on this map are open to motor vehicle use. Check with appropriate officials and obtain appropriate regulatory maps and information. Obtain permission before entering private lands.

This map product uses the most current data available in the USDA Forest Service cartographic database. Modifications, updates, and corrections may be made at any time. Print quality is determined by the output device used when producing a hardcopy product.



DEPARTMENT OF SPANISH AND PORTUGUESE
&
CENTER FOR REGIONAL STUDIES



HIGHWAYS AND ROADS	
Interstate	5
U.S.	101
State	70
County	6
National Forest, suitable for passenger cars	100 80
National Forest, suitable for high clearance vehicles	80
National Forest Trail	384

TRUCHAS PEAK, NM

The Manito Topos Project

Documentation

Comparative analysis

Manito Topos

This project has 3 aims:

- To document traditional place names or toponyms used by the Manito community.
- To compare those names with those recognized as official by the US Board on Geographic Names and printed on USGS and USFS topographic maps. This comparison reveals the extent to which toponymic silencing (cf. Harley 1988, 2001) has occurred and the linguistic strategy by which it was achieved.
- To contest the erasure of Manito toponymy by creating an alternative cartography representing the names of oral tradition. Hopefully this will contribute to the continued maintenance of this body of knowledge.

- I mapped some traditional toponyms from written and archival sources including books on local history and land grant documents.
- Scholar Roberto Valdez (cf. Valdez 2015) graciously shared 46 place names from his collection and taught me his method for eliciting names in conversation.
- As of November 2018, I have conducted 15 interviews, primarily with community elders, each having two parts:
 - A semi-structured sociolinguistic interview designed to elicit geographical discourse.
 - A joint mapping task using caltopo.com, Google Earth™, paper and PDF topos.
- To date this work has resulted in the documentation of the Manito names of 280+ places; 65 of these places were previously mapped as unnamed. About a fifth of the material is from the work of Roberto Valdez.

- The following linguistic strategies of place name manipulation were found to be in evidence on topographic maps published by the USFS:
 - intentional lack of accents
 - standardization of dialect
 - partial translation
 - full translation
 - new English names used where Manito names exist
- Many places which have names in oral use remain unnamed in official cartography: Sierra de las Truchas, Cerco de la Chana and Rincón de las Lagunas* are not included on the official Truchas Peaks quad.
- Many official names contain mistakes. Río de los Frijoles and Río del Medio are lacking their prepositional phrases on this map. Translated names are also often in error, e.g. Soldier's Creek from Rito de los Soldados.

- This map is one of 16 USFS Quads modified to reflect Manito naming practices, covering almost the entire Pecos Wilderness.
- These Manito Topos will be made freely available in digital format. Each map will have an interpretive gloss, clarifying the meaning and history of its names.
- The Manito Topos Project has a public Facebook page. The intent for this page is to be a venue for sharing the results of this research with the community and for community members to participate in the creation of a more Neuvomexicano map of Nuevo México. Please join us at <https://www.facebook.com/ManitoTopos/> or contact me at lennilsbeke@gmail.com

Harley, J. B. (1988). Silences and secrecy: the hidden agenda of cartography in early modern Europe. *Imago mundi*, 40(1), 57-76.
Harley, J. B. (2002). The new nature of maps: essays in the history of cartography (No. 2002). JHU Press.

Valdez, R. H. (2015). A Case Study in Toponymy: Sampling and Classifying a Trilingual Place Name Inventory Found in the North-Central State of New Mexico.

* The location of Rincón de las Lagunas is as yet unclear, hence the question mark next to the name on the map.